

Name | Travel Operations Assistant (Booking Delivery Team)

| | |
|-----------------------|--|
| Branch: | AUS Branch |
| Work location: | Brisbane office |
| Reports to: | Line Manager – Shino Kuroda (AUS Booking Delivery Team Leader) |

Our Values

In everything we do at Inside Travel Group, we strive to deliver a Quality and Friendly service with Integrity, Passion and Determination using our collective Knowledge. This is at the heart of the organization, and the company looks for every individual to demonstrate this daily.

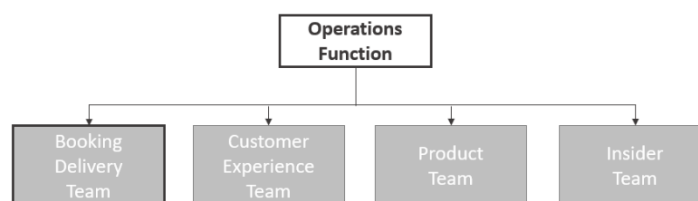
Leadership & professionalism

Inside Travel Group encourages everyone to take personal responsibility for leadership within the organization. Each member of the team is expected to exemplify the company values through their work and professional conduct. We expect everyone to set an example to those around them and to be conscious that they are representing the company when working with customers and partner organizations.

Job Purpose

You will contribute to the Operations Function (*) to ensure the smooth delivery of our bookings by making accurate travel arrangements in an efficient manner and assisting to the design of customer trips created by our travel consultants.

(*) Operations Function: Working towards a single goal of creating unforgettable journeys for ITG clients.



Relationships

You will be working closely with the Global Booking Delivery Team who are in the UK, US, Japan and Australia to process administrative tasks and responsibilities, and with the Global Sales Team, to offer day to day support. Since this position sits under the Operations Function, there will be many chances to collaborate and work together with other teams.

You will communicate regularly with Japanese suppliers and partners to ensure all services and arrangements are properly secured.

The Role

As a member of the Booking Delivery Team, your main duties will be to secure services on each booking. By supporting our Sales Function, and facilitating our clients' bookings, you will contribute vitally to the Operations Function's goal of 'Creating unforgettable journeys for ITG clients'.

You will also process daily administrative tasks related to sales, such as sending brochures and printing, compiling and sending travel documents to our clients.

While most of your work relates to the Booking Delivery Team, you will be asked to support and collaborate with other teams as a member of the Operations Function.

Outputs

- Great 'internal' customer service to our Sales Function
- Accurate confirmed services for our bookings

Main tasks and responsibilities - What You Will Do

- Making travel arrangements for tailor-made and group tour bookings (e.g., accommodation, restaurants, activities, excursions, guides, transportation, etc) by making a phone call, sending E-Mail & E-Fax, and/or using reservation systems.
- Keeping all information up-to-date and accurate on our internal Booking System (called Axum)
- Maintaining good relationships with our suppliers and partners
- Preparing bookings on Axum so that final trip documents (Info-Packs) can be generated
- Issuing and printing tickets such as Japan Rail Passes, IC-Cards, Air tickets, etc.
- Checking availability and pricing of services
- Assisting on product research
- Bilingual support in English and Japanese
- Handling customer feedback form
- Sending final trip documents (Info-Packs) to our clients
- Processing brochure request
- Printing general travel documents such as destination guides, dossiers, maps etc. and keeping them in stock

(Other Tasks)

- Collaborating with other function and/or teams to ensure the smooth delivery of bookings and process improvement
- Other duties assigned by your line manager for the overall benefit of the organization

Required experience and key skills - What You Will Need

- Highly motivated, well-organized individual with ability to handle a large variety of simultaneous tasks.
- Proactive, organized, and methodical, with well-developed problem-solving skills.
- High quality communication/Interpersonal skills in emails, in-person and on the phone
- Able to work independently and as part of a team
- Flexible approach, with the ability to work on own initiative and to tight timescales.
- High level of productivity and accuracy even when under time pressure.
- Ability to thrive in stressful situations and to cope with uncertainty, change and performance demands.
- Experience in administration or office work in general
- Proficient in MS Office (Excel, Word, Power Point, Outlook, Teams and SharePoint)
- A passion for Japan as a travel destination and desire to help others discover the country

-
- Native or near-native level Japanese (written and spoken)
 - Advanced level of English (written and spoken)
 - University/college undergraduate/bachelor's degree
 - Experience of living and/or working in Japan (plus but not essential)

Desirable attributes

- Calm under pressure
- Attention to detail
- Balance between team and independent work
- Self-motivated
- Flexible and adaptable to change
- Positive and constructive critical thinking for improvement

About Inside Travel Group

Inside Travel Group is a specialist tour operator whose head office is in Bristol, UK, with sales branches located in Boulder, Colorado and Brisbane, Australia, and an operations branch based in Nagoya, Japan. The company consists of specialist travel brands, InsideJapan Tours which was established in 2000 and InsideAsia Tours which specialises in travel to Asia.

The multi-award winning InsideJapan brand is one of the world's largest and most respected independent providers of travel to Japan. The company offers unique group tours, tailored travel, and cultural experiences that few get the chance to discover.

Our team have had years of experience living, working and travelling in destination countries, and we offer unrivalled advice and support, whatever the customer's budget or personal interests. Our trips give people the chance to experience both the popular and little-known aspects of Japanese and Asian culture, giving customers an insight into the diverse character of the countries we love.

Work Culture

You will be working in a vibrant office with a great team of employees all with a passion for destinations, a belief in the brands and a strong sense of collective values and purpose. Our work culture is supportive, creative and dedicated and is at its best when we all try to lead by example; the more you put in, the more you and the team get out, and it will be important that you play your part.

Pay and Conditions

| | |
|-----------------------|--|
| Salary | From \$42,721 per year base salary (according to skills and experience) plus bonus |
| Hours | 38 hours per week |
| Holiday | 20 days annually |
| Health | Employee Assistance Program Personal & Sick leave entitlements |
| Superannuation | 10% per annum |
| Bonus | A discretionary end of year bonus dependent on performance |
| Other | Covid-19 Vaccination side effects paid leave (1 day) Company paid parental leave – 1 week (in addition to any statutory entitlements) |

Candidates will need to have the unrestricted right to work permanently in Australia. For this position we are unfortunately unable to sponsor visas. At ITG, we will consider requests for flexible working on hiring.

Probation period: 6 months, which can be extended by 1 additional month if necessary.

If the above role is of interest, please apply now by sending an up-to-date CV/resume and full cover letter detailing your relevant skills and experience for the role to: jobs@insidetravelgroup.com